

WASH & CARE INSTRUCTIONS:

To clean: Surface wipe only; air dry.



visit us at www.summerinfant.com

Summer Infant stands behind all of its products. If you are not completely satisfied or have any questions, please contact our Consumer Relations Team at **1-800-268-6237** or www.summerinfant.com/contact (For Europe call +44 (0) 144 250 5000 or customerserviceuk@summerinfant.com)

connect with us:



Summer Infant, Inc.
1275 Park East Drive
Woonsocket, RI 02895 USA
1-800-268-6237
©2016 Summer Infant, Inc.

Summer Infant Europe, Ltd.
1st Floor, North Wing
Focus 31, Cleveland Road
Hemel Hempstead, HP2 7BW UK
0144 250 5000

MADE IN CHINA.
Colors and styles may vary.
Please retain information
for future reference.

9/16



SwaddleMe®

06640

Please read the following instructions and warnings carefully.

IMPORTANT! KEEP FOR FUTURE REFERENCE

Tools required: Phillips head screwdriver (not included).

Requires 3 “AAA” batteries (included).

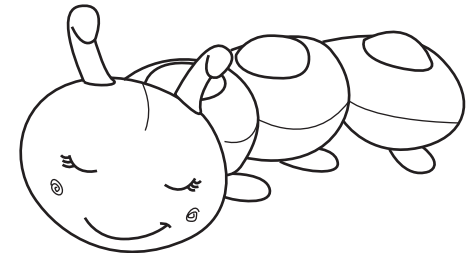
Adult assembly required.

For technical support, call **1-800-268-6237**, or e-mail at customerservice@summerinfant.com

In Europe, call **+44 (0) 208 420 4429**, or e-mail us at customerserviceuk@summerinfant.com

For use with children from birth and up.

Keep small parts away from children.



INSTRUCTION MANUAL

Cuddlebug™

Thank you for purchasing the Cuddlebug™ from Summer Infant. This huggable character was designed to help create a tranquil and calming environment for your little one at night. Using a comforting combination of three rhythmic light shows and your choice of three soothing sounds, the Cuddlebug™ easily soothes your child to sleep. This cute little character will quickly become your child's best friend!

- Complies with all applicable US government safety regulations and the safety requirements of ASTM F963.
- Exercise care when unpacking and assembling product.

BATTERY WARNING:

- Do not mix old and new batteries.
- Do not mix alkaline, standard, or rechargeable batteries.
- Remove batteries when product is stored for long periods of time or when batteries are exhausted.
- Dispose of exhausted batteries properly.
- Non-rechargeable batteries are not to be recharged.
- Rechargeable batteries are to be removed from the toy before being charged.
- Rechargeable batteries are only to be charged under adult supervision.
- Batteries are to be inserted with the correct polarity.
- The supply terminals are not to be short-circuited.

TO USE:

NOTE: Batteries are included for the “Try Me” mode. To activate the normal play mode, move switch to any of the three timer positions. When in “Try Me” mode, each function will automatically shut off after 15 seconds.

Power/Timer Control:

The main on/off/timer switch can be found next to the battery door on the bottom of the unit.

Open the pocket to locate the switch.

Turn switch to the “Off” position during long periods of inactivity.

ON/OFF/TIMER CONTROL:

1st position: “Try Me” mode

2nd position: Off

3rd position: On / 15 min auto shut-off

4th position: On / 30 min auto shut-off

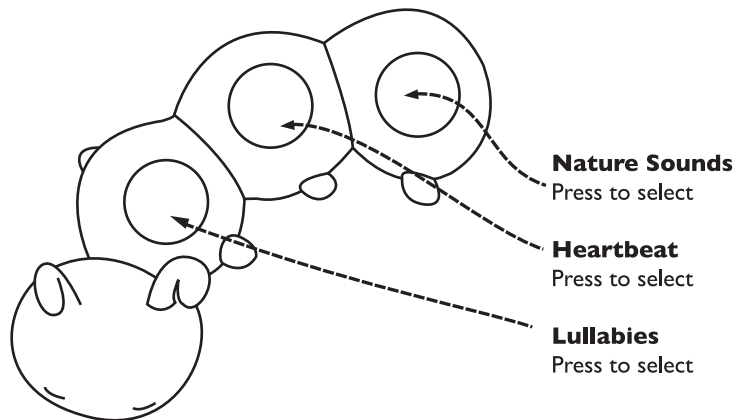
5th position: On / 45 min auto shut-off

☆ Starting the Soothing Display:

To first turn on, hold any of the three buttons for one second to start either lullabies, heartbeat, or nature sounds. Once the product is turned on, any mode can be easily selected by softly squeezing any button. You can turn off the lullabies, heartbeat, or nature sounds immediately by holding down any of the buttons for one full second.

🎵 Lullabies/Heartbeat/Nature Sounds:

To choose a mode, squeeze one of the three buttons to select either lullabies, heartbeat, or nature sounds. A corresponding light show will play with each mode selected. Once you make a decision, the sound and lights will play the selected amount of time before shutting off automatically.



TO CHANGE BATTERIES:

Step 1:

Open pocket on bottom of unit.

Step 2:

Use a Phillips head screwdriver to loosen battery door screw. Open battery door.

Remove old batteries and dispose of them safely.

Step 3:

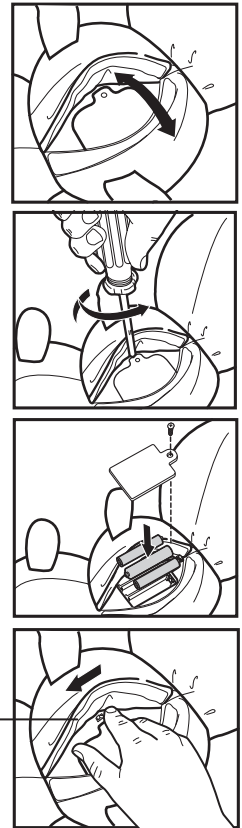
Insert 3 new “AAA” batteries, making sure that the “+ and -” are facing the correct way.

The battery compartment is marked for clarity.

Step 4:

Screw battery door back onto unit.

Make sure the On/Off Switch is in one of the three “On/Timer” positions and secure pocket.



On/Off/Timer Switch

RADIO AND TELEVISION INTERFERENCE:

This equipment has been tested and found to comply with the limits for a Class B digital device, pursuant to Part 15 of the FCC rules. These limits are designed to provide reasonable protection against harmful interference in a residential installation. This equipment generates, uses and can radiate radio frequency energy and, if not installed and used in accordance with the instructions, may cause harmful interference to radio communications. However, there is no guarantee that interference will not occur in a particular installation. If this equipment does cause harmful interference to radio or television reception, which can be determined by turning the equipment off and on, the user is encouraged to try to correct the interference by one or more of the following measures:

- Reorient or relocate the receiving antenna.
- Increase the separation between the equipment and the receiver.
- Connect the equipment into an outlet on a circuit different from that to which the receiver is connected.
- Consult the dealer or an experienced radio/TV technician for help.

You may also find helpful the following booklet, prepared by the FCC: “How to Identify and Resolve Radio-TV Interference Problems.” This booklet is available from the U.S. Government Printing Office, Washington D.C. 20402.

Changes and Modifications not expressly approved by Summer Infant, Inc. can void your authority to operate this equipment under Federal Communications Commissions rules.